

Example of cable management track



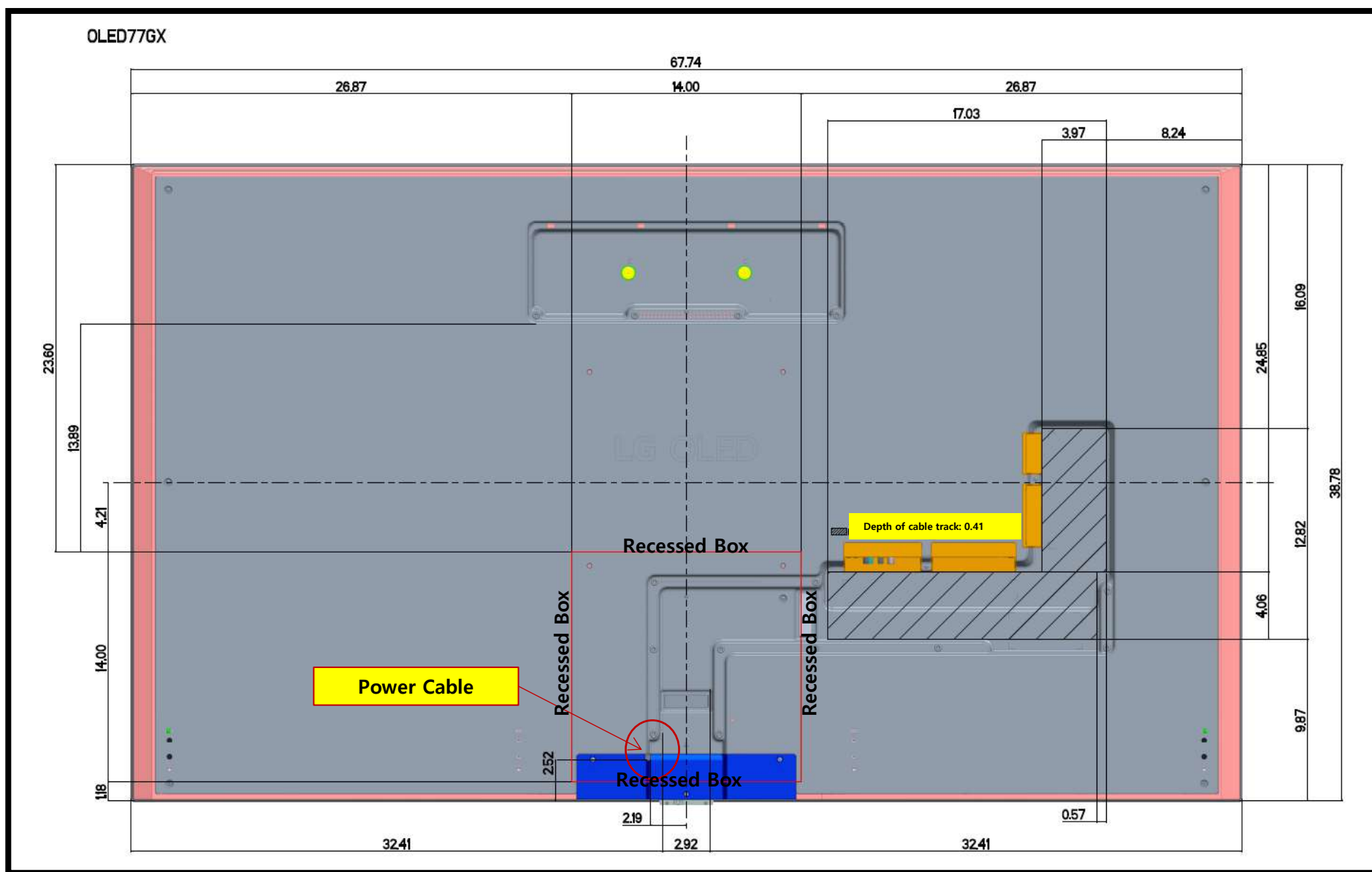
OLED65GX referenced in this image

*Red marked area is for reference only. Recessed box, sold separately, will vary in size and location depending on project.

*Bottom of recessed box needs to reside below power cable and above bottom of the TV.

*Recessed Box without flange, sold separately, must be utilized to achieve a no gap solution between the wall and TV.

*A gap between the wall and TV may occur if cables are managed outside of the cable management track.



*Red marked area is for reference only. Recessed box, sold separately, will vary in size and location depending on project.

*Bottom of recessed box needs to reside below power cable and above bottom of the TV

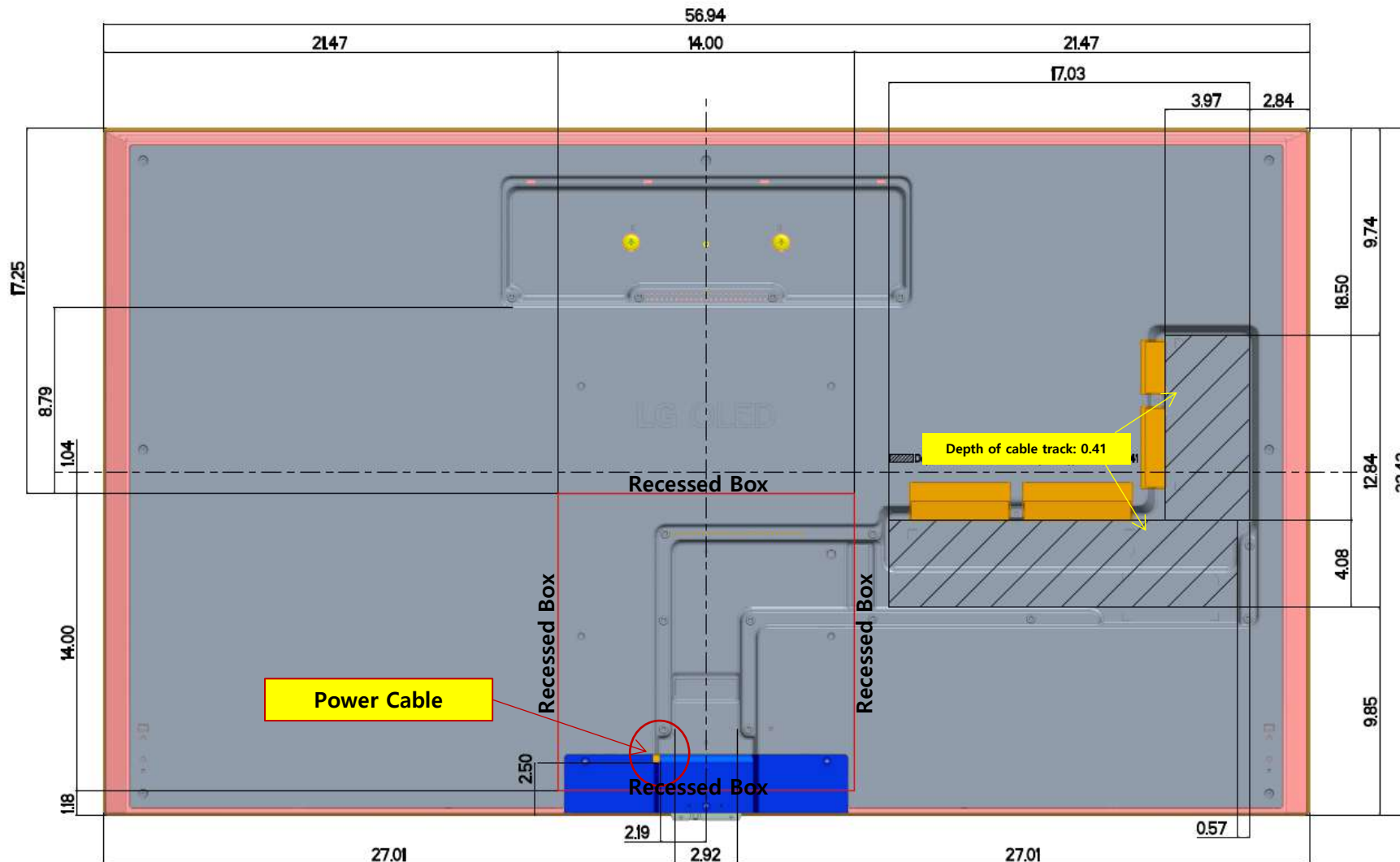
*Recessed Box without flange, sold separately, must be utilized to achieve a no gap solution between the wall and TV.

*A gap between the wall and TV may occur if cables are managed outside of the cable management track.

Example of cable management track



OLED65GX referenced in this image



Example of cable management track



OLED65GX referenced in this image

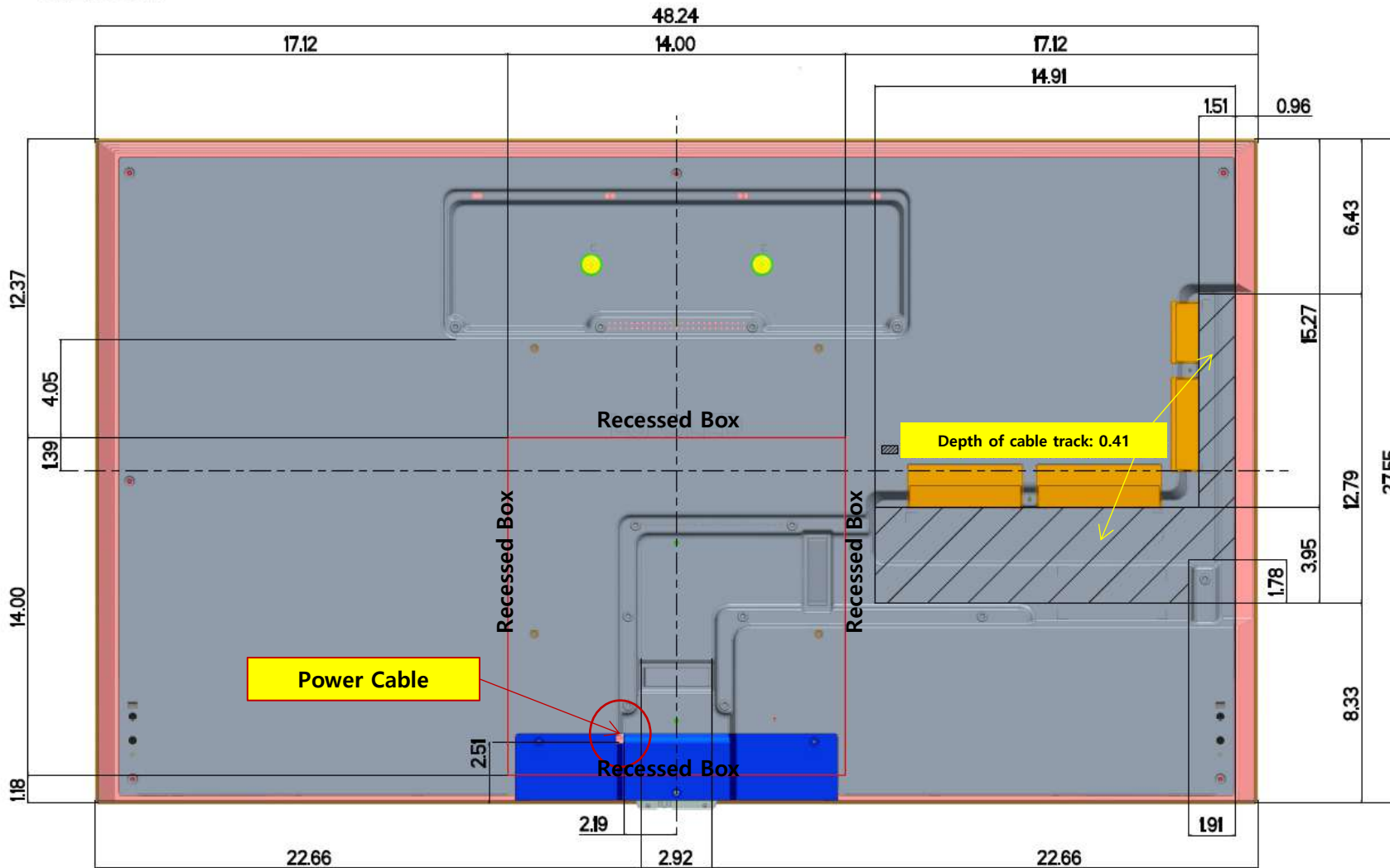
*Red marked area is for reference only. Recessed box, sold separately, will vary in size and location depending on project.

*Bottom of recessed box needs to reside below power cable and above bottom of the TV

*Recessed Box without flange, sold separately, must be utilized to achieve a no gap solution between the wall and TV.

*A gap between the wall and TV may occur if cables are managed outside of the cable management track.

OLED55GX



Example of cable management track



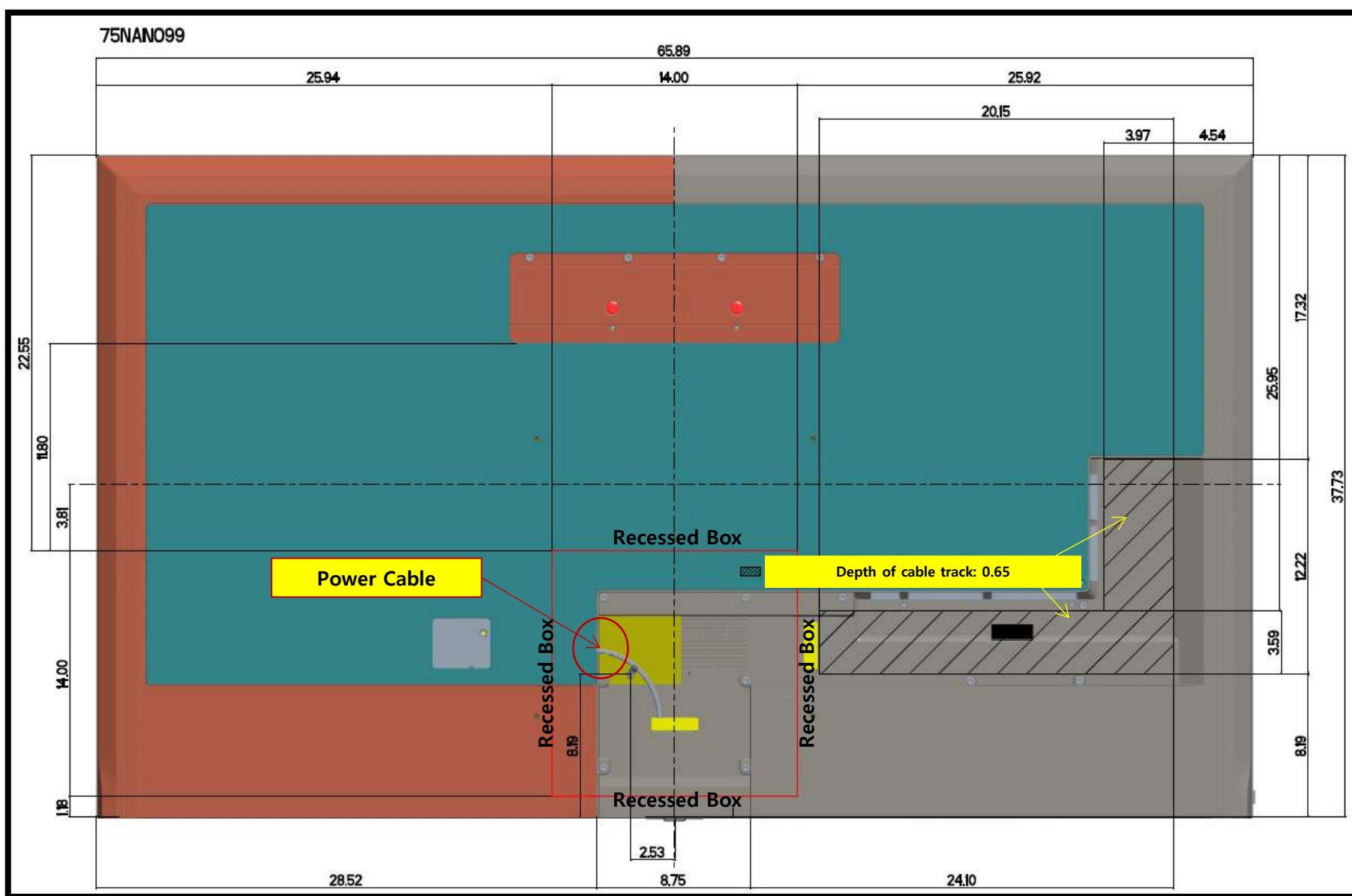
OLED65GX referenced in this image

*Red marked area is for reference only. Recessed box, sold separately, will vary in size and location depending on project.

*Bottom of recessed box needs to reside below power cable and above bottom of the TV

*Recessed Box without flange, sold separately, must be utilized to achieve a no gap solution between the wall and TV.

*A gap between the wall and TV may occur if cables are managed outside of the cable management track.



Example of cable management track



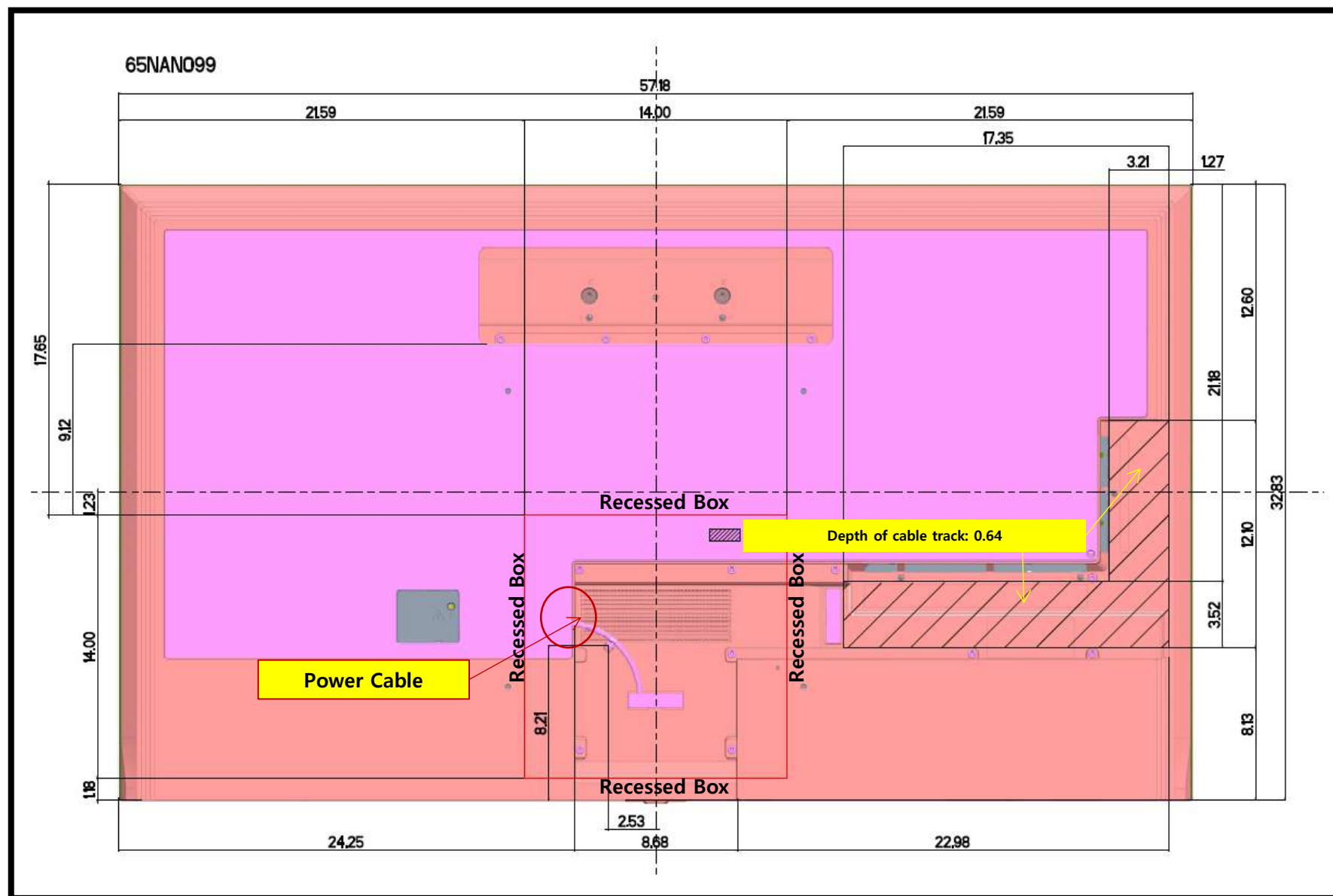
OLED65GX referenced in this image

*Red marked area is for reference only. Recessed box, sold separately, will vary in size and location depending on project.

*Bottom of recessed box needs to reside below power cable and above bottom of the TV.

*Recessed Box without flange, sold separately, must be utilized to achieve a no gap solution between the wall and TV.

*A gap between the wall and TV may occur if cables are managed outside of the cable management track.



Example of cable management track



OLED65GX referenced in this image

*Red marked area is for reference only. Recessed box, sold separately, will vary in size and location depending on project.

*Bottom of recessed box needs to reside below power cable and above bottom of the TV

*Recessed Box without flange, sold separately, must be utilized to achieve a no gap solution between the wall and TV.

*A gap between the wall and TV may occur if cables are managed outside of the cable management track.