



OWNER'S MANUAL

LG ProBeam

DLP Projector

Please read the safety information carefully before using this product.

HF80JS



www.lg.com

P/NO: MFL69727531(1701-REV00)

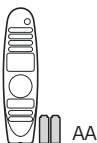
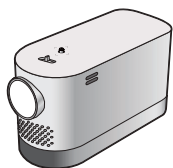


To See the Web Manual

Web manual allows you to easily access detailed Projector information. Go to <http://www.lg.com>.

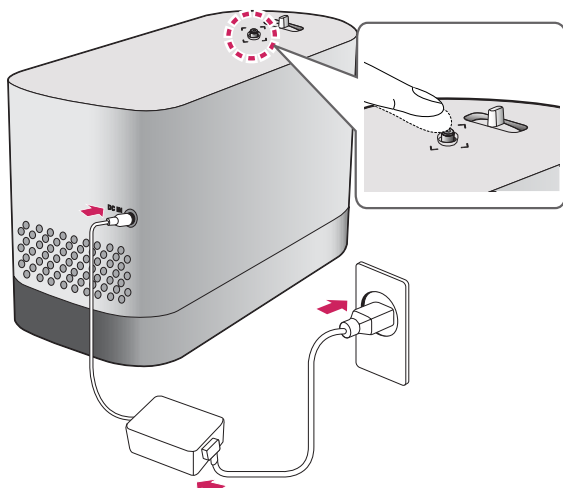
The pictures may differ slightly from the actual product.

Accessories are subject to change without prior notice. New accessories may be added or old ones removed.

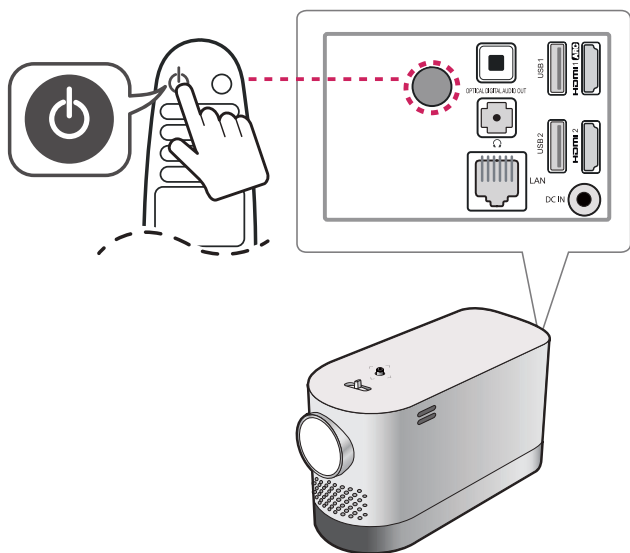
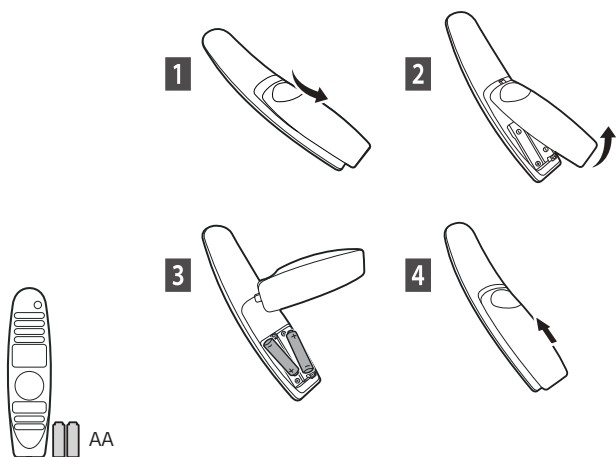


1

Step 1. Place the product in the desired location. Connect the power cord to the power supply, and then turn the product on.

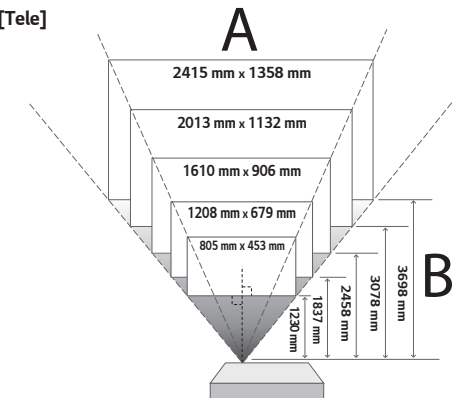
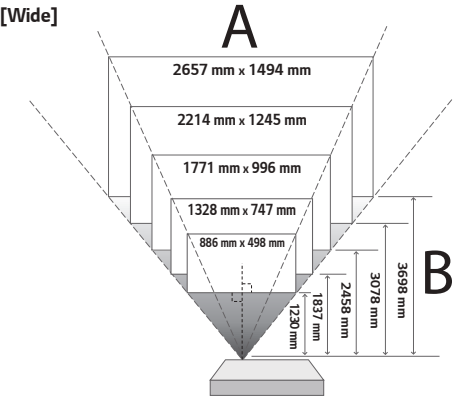


Power On	Power Off (Press and Hold)	Volume Control	Up/Down/Left/ Right

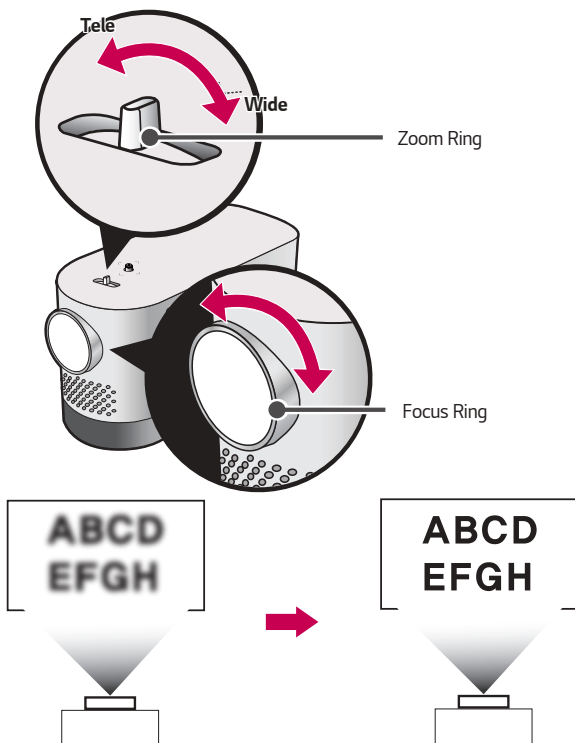


2

Step 2. Move the product back and forth to adjust the size of the projected screen, and then adjust the focus.



A	B
Width x Height of Projected Screen	Projection Distance

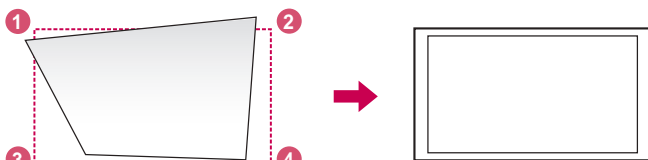


If the projected screen is not aligned properly, adjust the position of the product or align the projected screen by using the adjustable leg.

- You can also use the Edge Adjustment (4 Corner Keystone) feature to align the projected screen, if necessary.

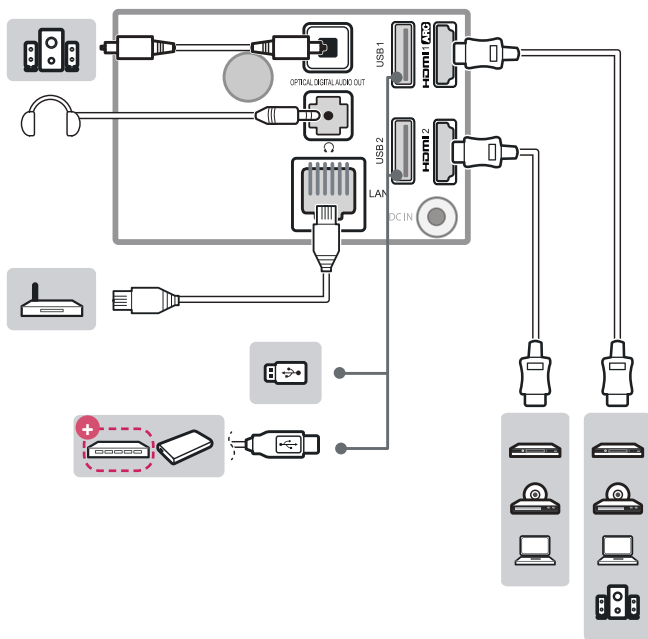
⚙️ → ⚙️ → **PICTURE** → **Edge Adj.**

Edge Adj. (4 Corner Keystone)



3

Step 3. You can connect the product to a desired contents device such as a USB, etc.



Some USB Hubs may not work. If a USB device connected through a USB Hub is not detected, connect it directly to the USB port on the Projector.

Licenses

Supported licenses may differ by model. For more information about licenses, visit www.lg.com.



Manufactured under license from Dolby Laboratories. Dolby, Dolby Vision, Dolby Audio, and the double-D symbol are trademarks of Dolby Laboratories.



The terms HDMI and HDMI High-Definition Multimedia Interface, and the HDMI logo are trademarks or registered trademarks of HDMI Licensing LLC in the United States and other countries.



For DTS patents, see <http://patents.dts.com>. Manufactured under license from DTS Licensing Limited. DTS, DTS-HD, the Symbol, & DTS or DTS-HD and the Symbol together are registered trademarks of DTS, Inc. © DTS, Inc. All Rights Reserved.




NOTE


- Image shown may differ from your projector.
- Your projector's OSD (On Screen Display) may differ slightly from that shown in this manual.

Safety precautions

Please take note of the safety instructions to prevent any potential accident or misuse of the projector.

- Safety precautions are given in two forms, i.e., **WARNING** and **CAUTION** as detailed below.

 **WARNING** Failure to follow the instructions may cause serious injury and even death.

 **CAUTION** Failure to follow the instructions may cause personal injury or product damage.

- Read the owner's manual carefully and keep it on hand.



The lightning flash with arrowhead symbol, within an equilateral triangle, is intended to alert the user to the presence of uninsulated dangerous voltage within the product's enclosure that may be of sufficient magnitude to constitute a risk of electric shock to persons.



The exclamation point within an equilateral triangle is intended to alert the user to the presence of important operating and maintenance (servicing) instructions in the literature accompanying the appliance.

WARNING/CAUTION

- TO REDUCE THE RISK OF FIRE AND ELECTRIC SHOCK, DO NOT EXPOSE THIS PRODUCT TO RAIN OR MOISTURE.

Read these instructions. Keep these instructions.

Heed all warnings. Follow all instructions.

WARNING

- The grounding wire should be connected. (Except for devices which are not grounded.)
 - Ensure that you connect the grounding cable to avoid electric shock. If it is not possible to ground the unit, have a qualified electrician install a separate circuit breaker. Do not try to ground the projector by connecting it to telephone wires, lightning rods, or gas pipes.

- To turn off the main power, remove the power plug, which should be positioned so it is easy to access for operation.
- Do not place anything containing liquid on top of the projector such as a vase, flower pot, cup, cosmetics, or medicine; or ornaments, candles, etc.
- Never open any cover on the projector.
 - There is a high risk of electric shock.
- Do not look directly into the lens when the projector is in use.
 - The bright light may damage your eyes.
- When the lamp is on or has just been turned off, avoid touching the air vent or lamp, because these will be very hot.
- Proper ventilation required, do not block airflow around unit. Doing so can cause injury and internal overheating.
- To prevent damage to lamp, unit must remain plugged in for approximately 3 minutes after power down to allow for proper cool down (not applicable on LED models).
- Do not touch the lens; doing so can result in burns or damage to lens. Lens and unit may be HOT during and immediately after use. Use caution when handling unit, allowing for proper cool down.
- Do not insert anything into or cover up the exhaust vents.
 - This may result in fire or electric shock.
- Do not insert pieces of metal such as coins, hairpins, or metal debris, nor flammable materials such as paper or matches into the projector.
- Follow all maintenance guidelines for optimal use; service only at an authorized service centre.
- **DISCONNECTING THE DEVICE FROM THE MAIN POWER**
 - The Power plug is the disconnecting device. In case of an emergency, the Power Plug must remain readily accessible.

CAUTION

- When cleaning plastic parts such as the projector case, unplug the power first and wipe with a soft cloth. Do not spray with water or wipe with a wet cloth. Never use glass cleaner, automobile or industrial polish, abrasives, wax, benzene, or alcohol as these can damage the projector.
- Do not wipe the optical system (lens, mirror) right after the product has been turned off or while the product is being operated. When cleaning each part of the product, remove the power cord and wipe gently with a soft cloth. Do not spray with water or wipe with a wet cloth. Do not use detergents, automobile or industrial polish, abrasive substances, wax, benzene, alcohol, water, etc. on the product's main unit or optical system (lens, mirror) as this may damage the product.
 - This can result in fire, electric shock or cause damage to the product (deformation and corrosion).
- When moving the projector, make sure to switch it off and remove the power plug and cords.
 - The power cord may be damaged, resulting in fire or electric shock.

Risk Group 2

CAUTION Possibly hazardous optical radiation emitted from this product. Do not stare at operating lamp. May be harmful to the eye.

This label is attached to the bottom of the product.

Wireless module (LGSBW41) specifications

Wireless LAN (IEEE 802.11a/b/g/n)	
Frequency range	Output power(Max.)
2400 MHz to 2483.5 MHz	16 dBm
5150 MHz to 5250 MHz	16 dBm
Bluetooth	
Frequency range	Output power(Max.)
2400 MHz to 2483.5 MHz	10 dBm

- As band channels can vary per country, the user cannot change or adjust the operating frequency. This product is configured for the regional frequency table.
- For consideration of the user, this device should be installed and operated with a minimum distance of 20 cm between the device and the body.

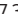
Open source software notice information

To obtain the source code under GPL, LGPL, MPL, and other open source licenses, that is contained in this product, please visit <http://opensource.lge.com>.

In addition to the source code, all referred license terms, warranty disclaimers and copyright notices are available for download.

LG Electronics will also provide open source code to you on CD-ROM for a charge covering the cost of performing such distribution (such as the cost of media, shipping, and handling) upon email request to opensource@lge.com. This offer is valid for three (3) years from the date on which you purchased the product.

Specifications

MODEL	HF80JS(HF80JS-EU)	
Resolution (Pixel)	1920 (Horizontal) × 1080 (Vertical)	
Aspect ratio	16:9 (Horizontal:Vertical)	
Panel size	11.938 mm	
Projection distance (Video size)	905 mm to 3698 mm (762 mm to 3048 mm)	
Ratio of upward projection	100 %	
Working range of the remote control	6 m	
Power	AC 100 - 240 V, 50 Hz/ 60 Hz	
Power consumption	140 W	
AC-DC Adaptor	Manufacturer : Lien Chang Model : LCAP31	
	19 V  7.37 A (Adaptor Input 100-240 V @ 50/60 Hz)	
Audio Output	3 W + 3 W	
Height	140 mm (without foot), 144 mm (with foot)	
Width	108.0 mm	
Depth	252.3 mm	
Weight	2.1 kg	
USB Device	5 V, 0.5 A (Max.)	
Environment Condition	Temperature	
	Operation	0 °C to 40 °C
	Storage	-20 °C to 60 °C
	Relative Humidity	
	Operation	0 % to 80 %
	Storage	0 % to 85 %

- Use only power supplies listed in the user instructions.
- Contents in this manual may be changed without prior notice due to upgrade of product functions.



The model and serial number of the projector are located on the back or on the side of the projector. Record them below should you ever need service.

MODEL _____

SERIAL _____